

613 RESIN

NEW

Room temperature hardening embedding resin, low viscosity and CMR-free*.

Embedding is a step in metallographic sample preparation which enables pre-polishing and polishing of pieces in a more ergonomic way. In some cases, impregnation may be necessary to preserve the integrity of the sample.

Description

Resin 613 is a hard bi-component epoxy resin used for high quality embedding at room temperature.

Resin 613 is low shrinkage, adheres perfectly to all types of material and has very good chemical resistance.

With an ideally suitable viscosity, resin 613 is used to embed metallographic samples which have complex shapes, are porous or for delicate coating techniques.

This resin is the best choice when transparence and/or hardness are of high importance.

Features

Limited polymerization temperature.

Can be used in impregnation with the M.M.818 vacuum embedding machine.

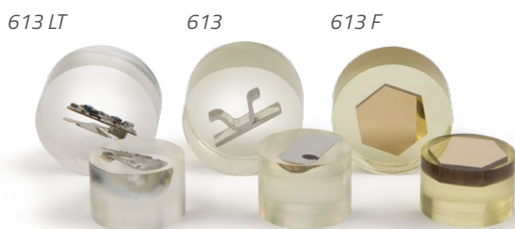
Bubble removal and shrinkage can also be improved by using the M.M.808 pressure embedding machine.

Does not contain CMR.

Easy to use, 2 components.



Mounted samples after polishing



Also available in fast-hardening version 613F and hardening without temperature increase 613LT.

Technical data	613 RESIN
Material	Epoxy
Pack format	Kit containing 1000 ml liquid resin + Hardener 500 ml - Code KITO600613 00 Liquid resin 1000 ml - Code 06 02613 00 Hardener 500 ml - Code 06 01613 00
Dosage	2 parts resin to 1 part hardener
Appearance	Transparent and colourless
Polymerization time	10 h at 20°C
Hardness	85 Shore D
Exothermic temperature	50°C**
Volumetric shrinkage	Very low, 0 µm if used with the M.M.808 machine
Presence of CMR*	None
Suitable for impregnation	Yes



* CMR: Carcinogenic, Mutagenic, Reprotoxic.

** Exothermic temperature during polymerization for a 40g resin sample at 20°C.



Safety data sheets