

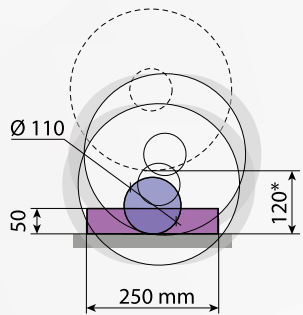
CUTTING MACHINES

CUTTING MACHINES



Theoretical cutting capacity - Ø 305 mm disc

**space under wheel*



CUTLAM® 1.1



The CUTLAM®1.1 is a universal cut-off machine. User-friendly and robust, it offers high cutting capacity thanks to its offset motor design. It allows you to introduce simple, versatile equipment based on first-class components into your laboratory.

The spacious cutting table is made from corrosion-resistant cast iron, and is easily accessible thanks to the fully-open bonnet and remote motor mounting. The 4 perpendicular grooves allow workpieces up to 120 mm thick to be clamped. The CUTLAM®1.1 can be fitted with grinding wheels from Ø 250 to 300 mm.

Equipped as standard with a variable speed drive and a powerful 3.8 kW motor particularly suited to 300 mm diameter wheels, the CUTLAM®1.1 can withstand intensive use. The high-capacity recirculation system, mounted on castors with pre-filter and decantation compartments, ensures optimum lubrication and cooling via multi-point spraying.

The cutting chamber is illuminated by a heavy-duty aluminium LED spotlight. The machine's protective bonnet is made up of 2 parts: a large glazed area to ensure good visibility of the cutting chamber, and a lacquered metal belt to give this protective element great rigidity. An interlocking system locks the protective cover when the grinding wheel is rotating.

This machine has 2 side openings, enabling it to cut bars with a maximum diameter of 60 mm.

An external shower and an inclined cutting chamber bottom An external spray head and inclined cutting chamber base make cleaning easy, and a strainer prevents samples from rushing into the large-diameter flow.

| Technical Data | CUTLAM®1.1 |
|-------------------------|---|
| Wheel Ø | 250-305 mm |
| Shaft Ø | 25,4 mm |
| Standard flanges Ø | 80 mm |
| Max cutting capacity | Ø 110 mm (Ø 305 mm disc) |
| Passage under the wheel | 120 mm (Ø 305 mm disc) |
| Vertical movement | Manual |
| Lubrication | Recirculation system, 60 litres, on casters, integrated cleaning system, with shower head located outside the cutting chamber |
| Motor power | 3,8 kW |
| Rotational speed | Variable, from 1000 to 4000 rpm |
| Table | Stainless steel, 400 x 300 mm |
| Type of groove | T groove 12 mm (2 longitudinals, 2 transversals) |
| Lightening | LED |
| Protection | Transparent cover with locking system |
| Body | Epoxy painted coated steel |
| Voltage | 400 Volts - 50 Hz (three-phase) |
| Dim. W x H x D | 630 x 650 x 820 mm - H opened cover: 820 mm |
| Weight | 125 kg |
| Reference | 60 CT110 00 |

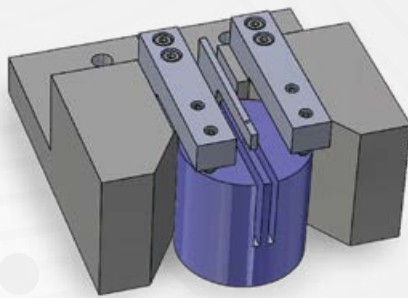
Example of application: cutting of a sphere

One of the recurrent issues remaining in the cutting processes is the clamping of spherical parts. The implementation of this kind of vice on the CUTLAM®1.1 enables to cut spheres having a diameter going from 30 mm to 60 mm.



Example of application: cutting of a glass cylinder with double wheel

Tooling allowing the removal of a 3 mm slice from a glass cylinder Ø 50 mm, height 50 mm. This article includes the supply and installation of a specific clamp and a double grinding wheel on a CUTLAM® 1.1 machine.



Accessories

| | |
|--|--------------|
| Fast tightening double vice system | 60 CT200 20 |
| Double transverse quick-clamping vices for table 60 CT205 20, right-hand lever. Jaws: W 80 x H 45 mm | 60 CT206 20 |
| Screw tightening double vice system | 60 CT200 40 |
| Universal clamping vice KOPAL 61 | 60 081282 20 |
| Clamping flange adjustment | 60 081282 40 |
| Long shaft for clamping flange KOPAL | 60 00285 90 |
| Cabinet: 1 drawer, 1 storage + integration of the recirculation tank | 60 M0100 00 |
| Universal table (X axis) for parallel cuttings | 60 CT205 20 |
| Aspiration/filtration set (see specific page) | 60 CT204 00 |



CUTLAM® support cabinets

Solid painted-steel piece of furniture specially designed for CUTLAM® products.

It contains a storage door for tools and cut-off wheels, a drawer on top and a space for the recirculation tank. This piece of furniture is stable and has adjustable feet.

For CUTLAM®micro 3.0 and CUTLAM® 1.1
Dimensions W x H x D: 630 x 800 x 835 mm.
Reference: 60 M0100 00

For CUTLAM® 3.1
Dimensions W x H x D: 700 x 800 x 1050 mm.
Reference: 60 M0310 00

